

HTML Tables

- Table created using tags `<table>` `</table>`
- Internal structure of rows and columns
- Rows defined by `<tr>` `</tr>`
- Each row contains cells (columns)
- Data in cell defined by `<td>` `</td>`
- Column headings defined by `<th>` `</th>`
- Table data elements contain any HTML element

Table Example

```
Testtable2 - Notepad
File Edit Format Help
<html>
  <head>
    <title> Table Page</title>
  </head>
  <body>
    <table border>
      <th> Column 1 </th> <th> column 2</th> <th> column 3</th>
      <tr>
        <td>cell(1,1)</td><td>cell(1,2)</td><td>cell(1,3)</td>
      </tr>
      <tr>
        <td>cell(2,1)</td><td>cell(2,2)</td><td>cell(2,3)</td>
      </tr>
    </table>
  </body>
</html>
```

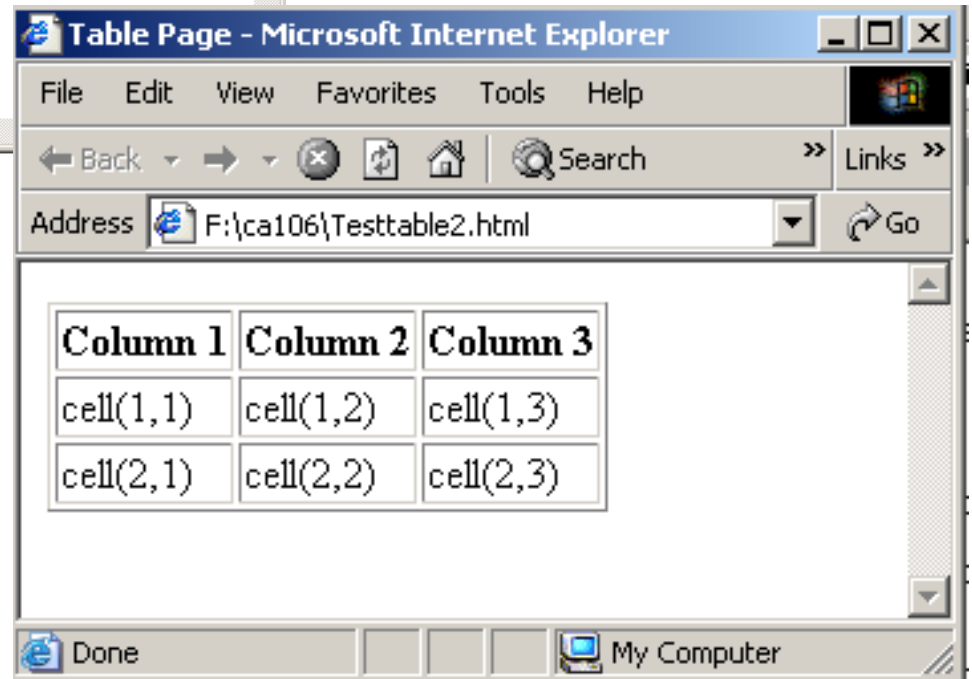
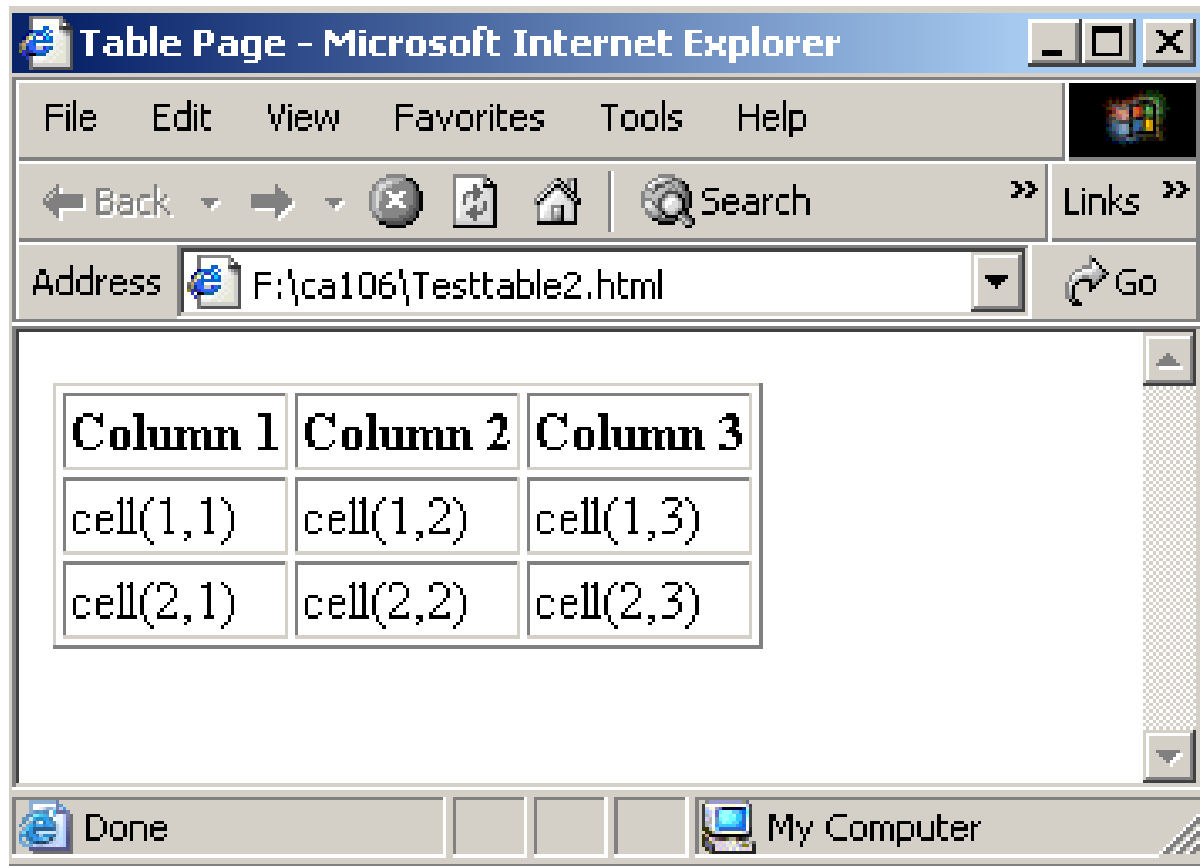


Table Example View

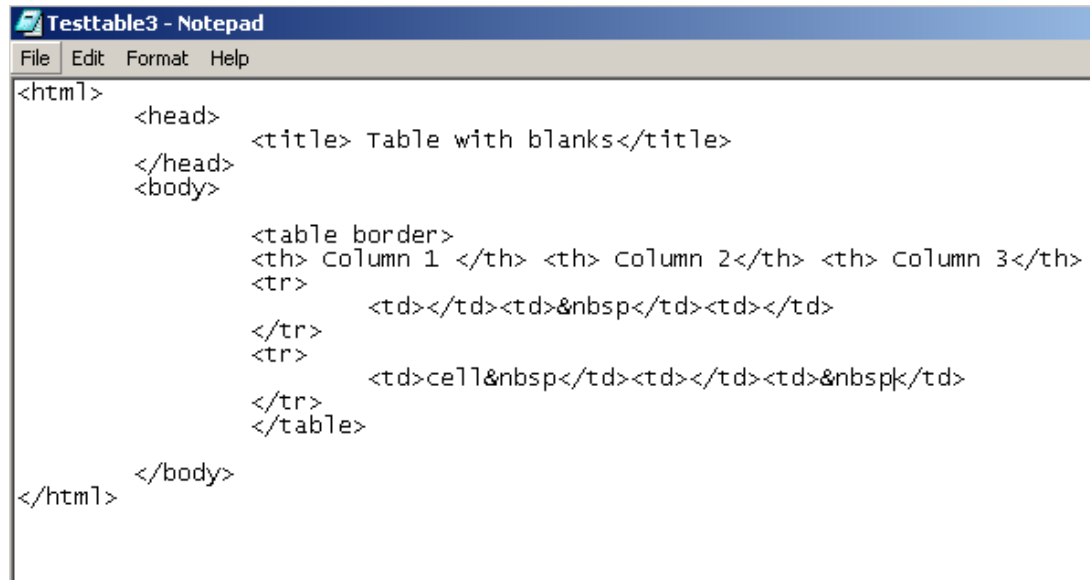


To Note

- `border` places border around table
- Number of columns is number of cells in a row

Empty Cells

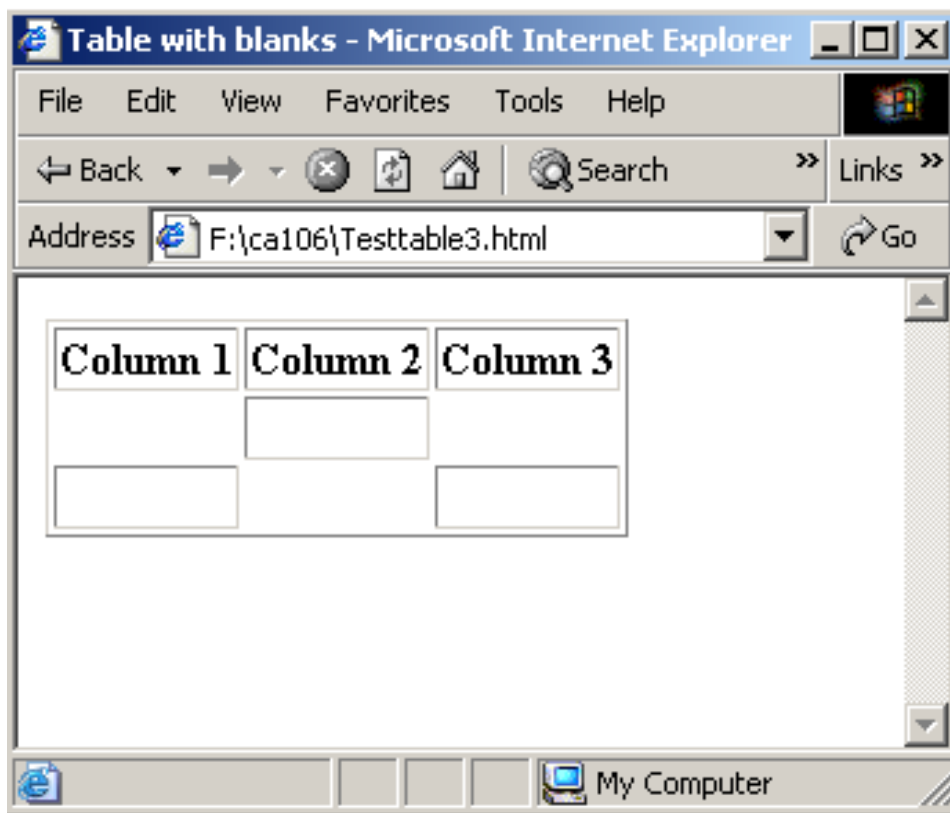
- HTML ignores blanks
- Can use special non-breaking space ` ` to create space, and distinguish between empty cells and cells containing space



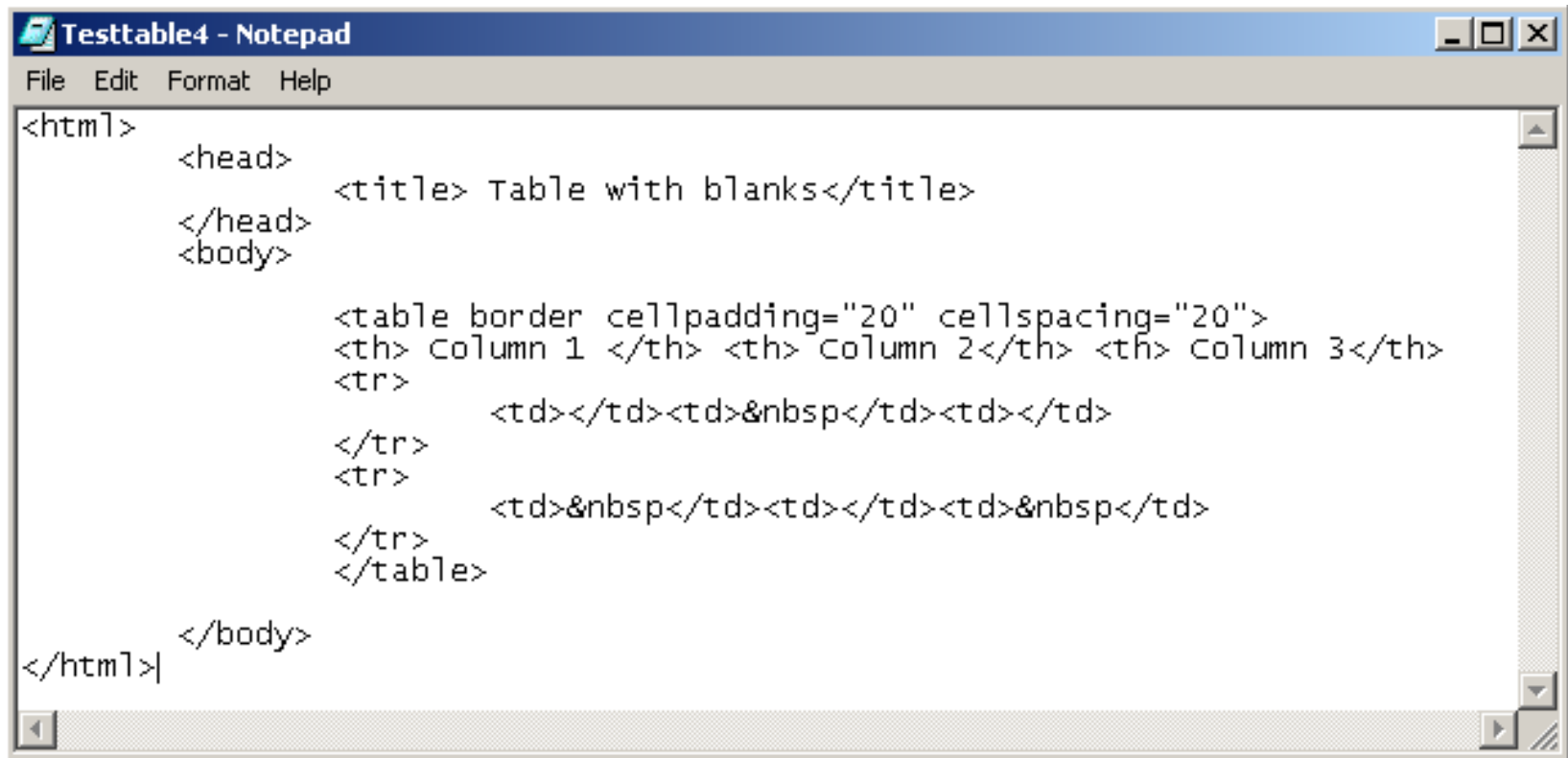
```
<html>
  <head>
    <title> Table with blanks</title>
  </head>
  <body>
    <table border>
      <th> Column 1 </th> <th> Column 2</th> <th> Column 3</th>
      <tr>
        <td></td><td>&nbsp;</td><td></td>
      </tr>
      <tr>
        <td>cell&nbsp;</td><td></td><td>&nbsp;</td>
      </tr>
    </table>
  </body>
</html>
```

Empty Cells and Blank Cells

- Cells (1,1), (1,3) and (2,2) are blank



Some <table> attributes



```
<html>
  <head>
    <title> Table with blanks</title>
  </head>
  <body>
    <table border cellpadding="20" cellspacing="20">
      <th> Column 1 </th> <th> Column 2</th> <th> Column 3</th>
      <tr>
        <td></td><td>&nbsp;</td><td></td>
      </tr>
      <tr>
        <td>&nbsp;</td><td></td><td>&nbsp;</td>
      </tr>
    </table>
  </body>
</html>
```

Cell Padding and Cell Spacing

- `cellspacing` changes width of cell
- `cellpadding` changes margins within cells.

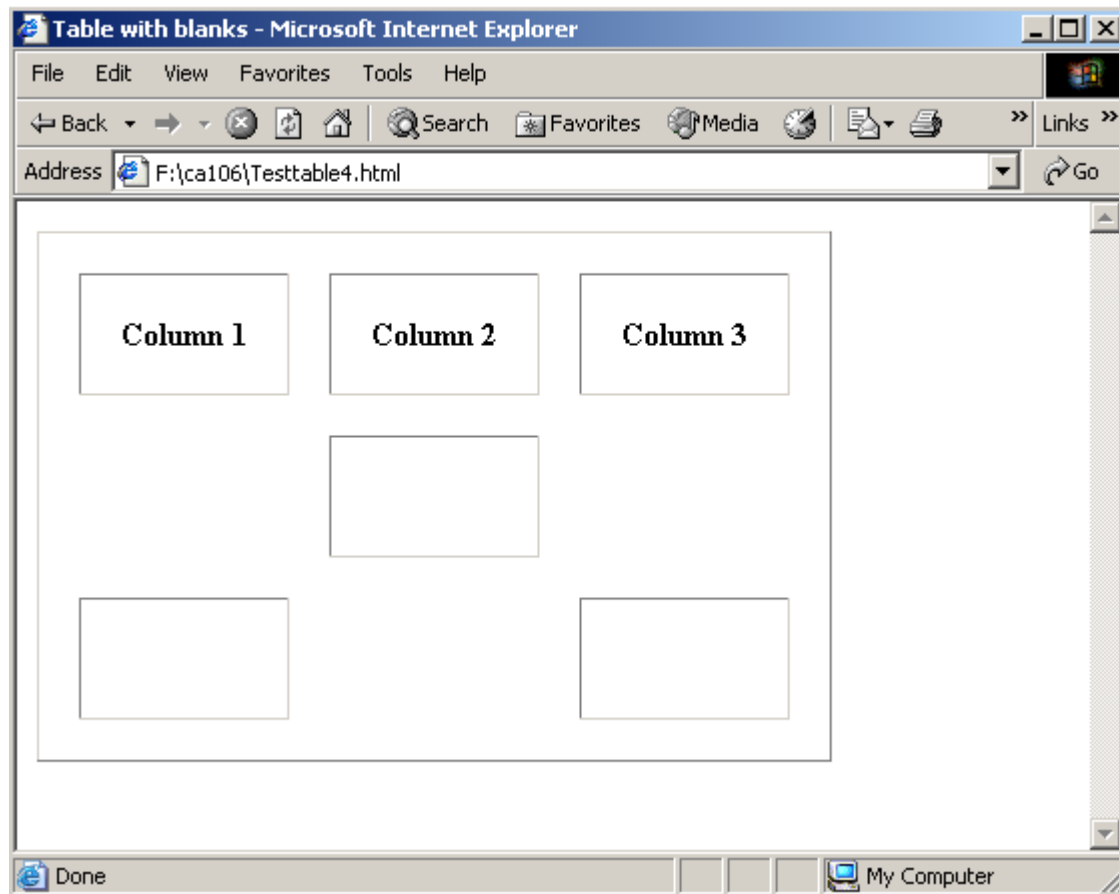
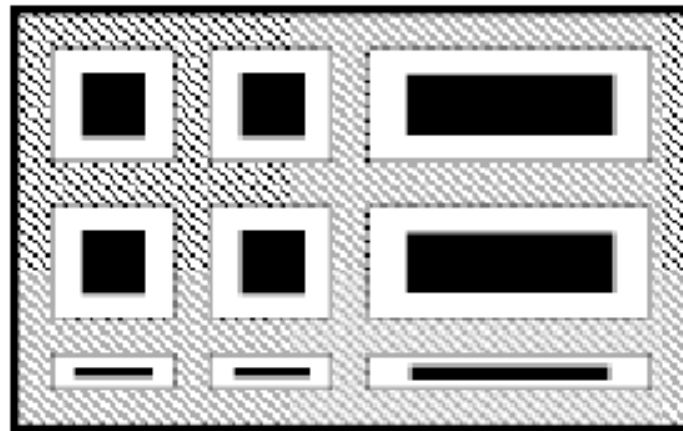



Table border _____



Cellspacing 

Cellpadding 

Cell content 

Some attributes of <th> and <td>

- Background colour and inclusion of images

```
Testtable5 - Notepad
File Edit Format View Help
<html>
  <head>
    <title> Table with image and background colour </title>
  </head>
  <body>
    <table border cellpadding="20" cellspacing="20">
<!--table with imagees and background colour-->
      <th> Column 1 </th> <th> Column 2</th> <th bgcolor="#FF0000"> Column 3</th>
      <tr>
        <td></td><td><IMG SRC="dcuologo.jpg"></td><td></td>
      </tr>
      <tr>
        <td bgcolor="#00FF00">&nbsp;</td><td></td><td bgcolor="#0000FF">&nbsp;</td>
      </tr>
    </table>
  </body>
</html>
```

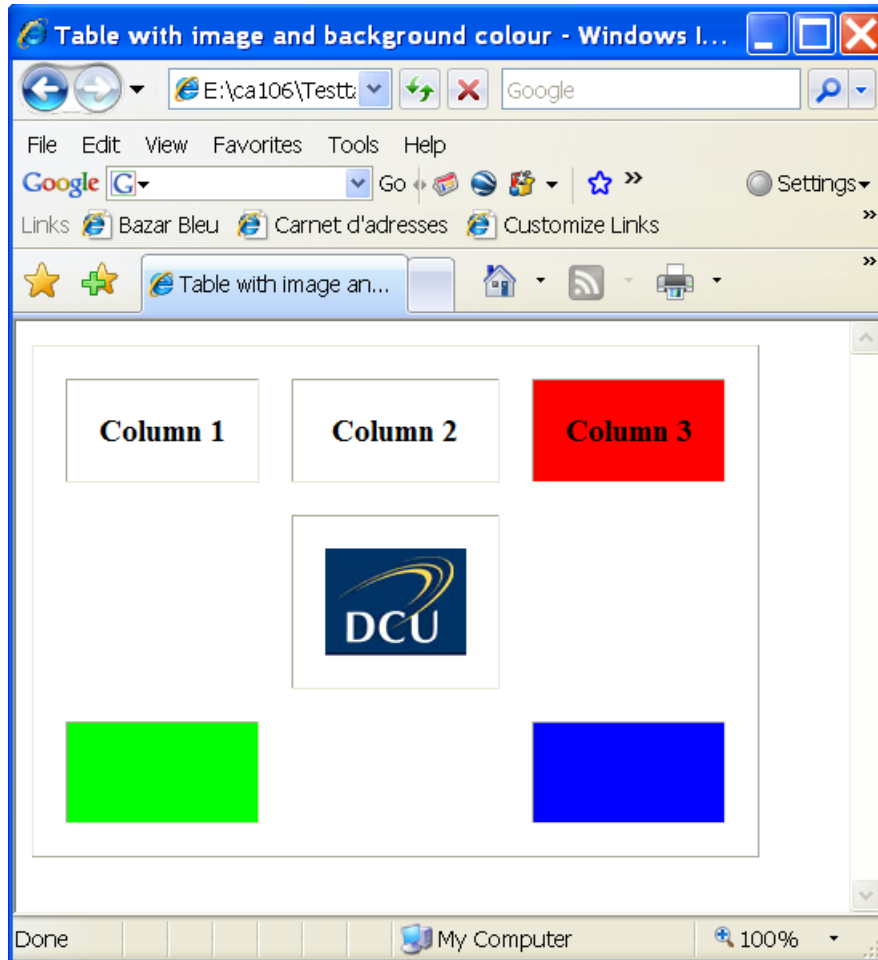
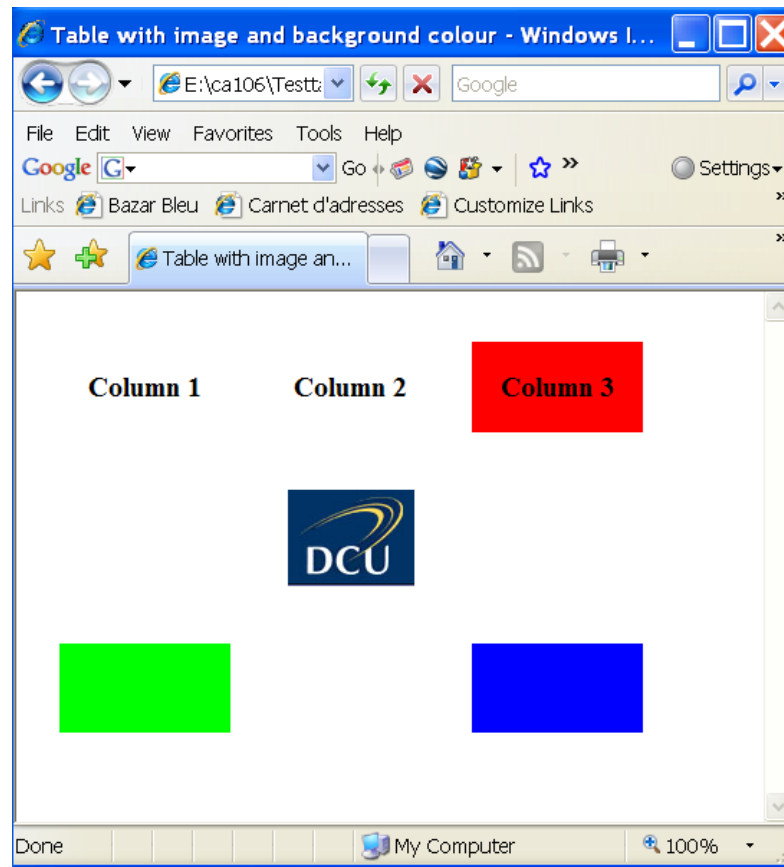


Table with no border attribute

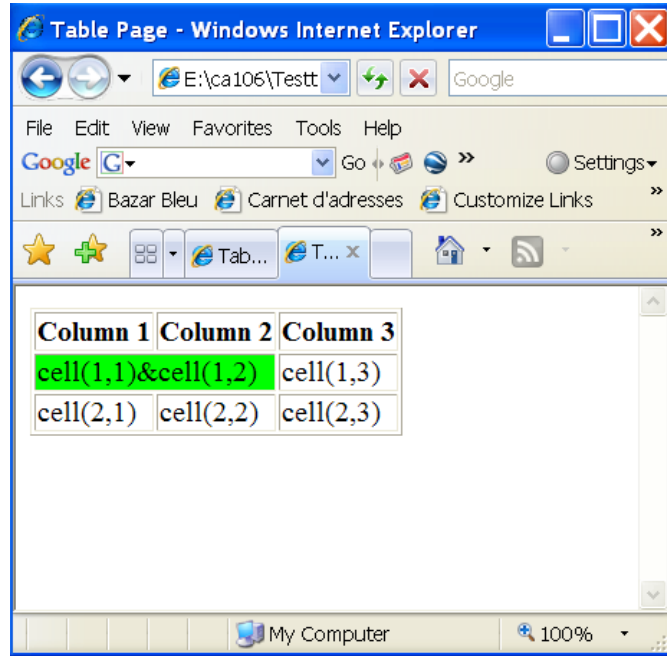


Merged Cells - Spanning

- Normally number of cells same in each row and in each column. To combine cells:



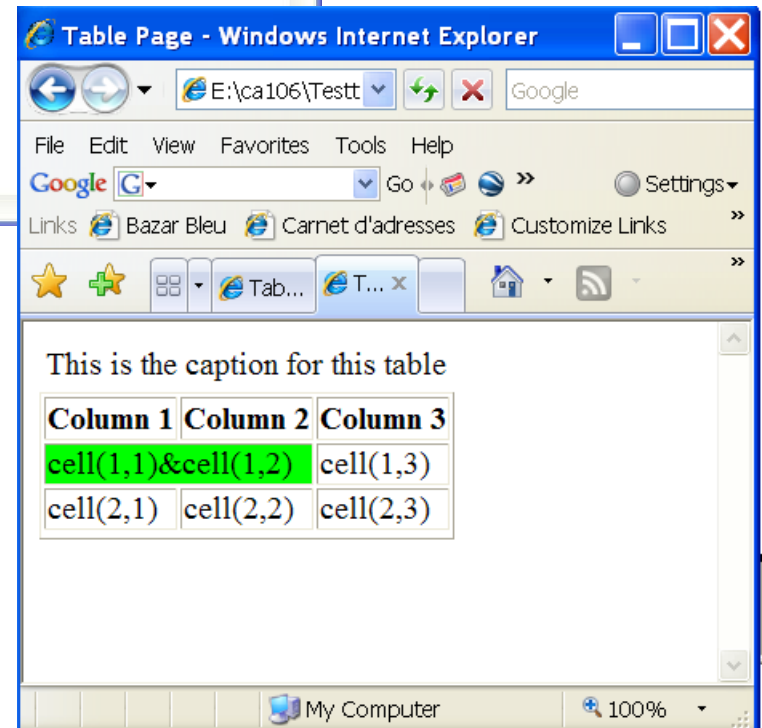
```
<html>
  <head>
    <title> Table Page</title>
  </head>
  <body>
    <table border>
      <th> Column 1 </th> <th> Column 2</th> <th> Column 3</th>
      <tr>
        <td bgcolor="#00FF00" colspan="2"> cell(1,1)&cell(1,2)</td><td>cell(1,3)</td>
      </tr>
      <tr>
        <td>cell(2,1)</td><td>cell(2,2)</td><td>cell(2,3)</td>
      </tr>
    </table>
  </body>
</html>
```



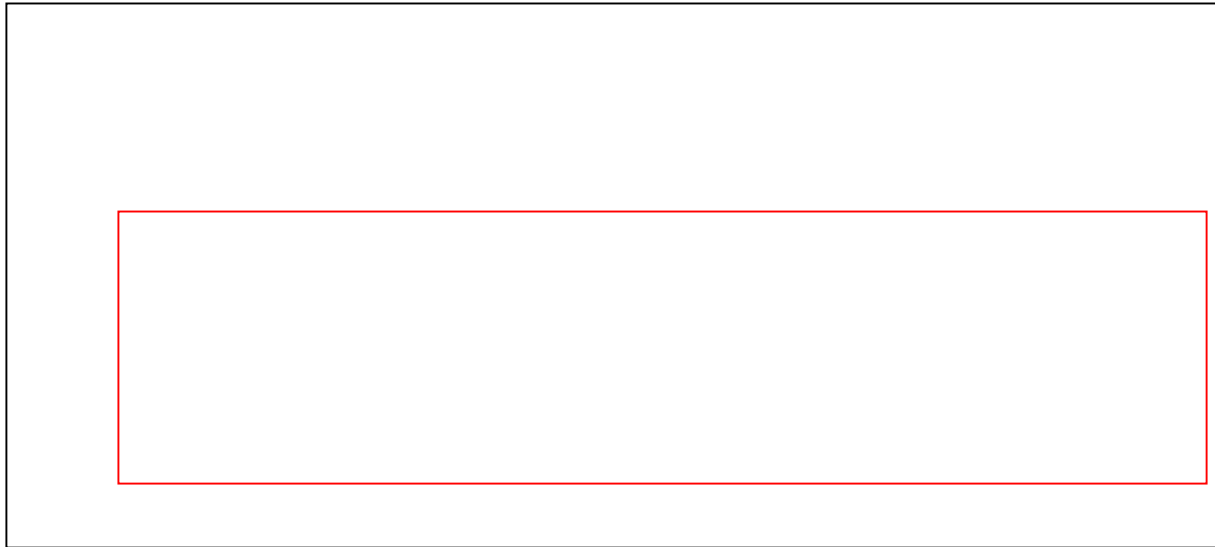
Note – can also combine cells down columns e.g. `rowspan="3"`

Adding a caption

```
Testtable6caption - Notepad
File Edit Format View Help
<html>
  <head>
    <title> Table Page</title>
  </head>
  <body>
    <table border>
      <th> Column 1 </th> <th> Column 2</th> <th> Column 3</th>
      <tr>
        <td bgcolor="#00FF00" colspan="2"> cell(1,1)&cell(1,2)</td><td>cell(1,3)</td>
      </tr>
      <tr>
        <td>cell(2,1)</td><td>cell(2,2)</td><td>cell(2,3)</td>
      </tr>
      <caption> This is the caption for this table</caption>
    </table>
  </body>
</html>
```



Nested tables



Nested Tables

```
<html>
  <head>
    <title> Nested tables</title>
  </head>
  <body>
    <table border>
      <tr>
        <th> column 1</th><th> column 2</th><th> Colmn 3</th>
      </tr>
      <tr>
        <td colspan = "2" bgcolor="#00FFFF">(1,1) & (2,1)</td><td>(3,1)</td>
      </tr>
      <tr>
        <td bgcolor="#FF00FF">
          <table border>
            <tr>
              <th> col 1</th> <th> col 2</th> <th> col 3</th>
            </tr>
            <tr>
              <td rowspan="2" bgcolor="#0000FF">c(1,1)&c(2,1)</td><td>c(1,2)</td><td>c(1,3)</td>
            </tr>
            <tr>
              <td>c(2,2)</td> <td>c(2,3)</td>
            </tr>
          </table>
        </td><td>(2,2)</td><td>(3,2)</td>
      </tr>
    </table>
  </body>
</html>
```

Nested tables - Windows Internet Explorer

E:\ca106\Tablen Google

File Edit View Favorites Tools Help

Google G Go Settings

Links Bazar Bleu Carnet d'adresses Customize Links Free Hotmail

Nested tables

Column 1	Column 2	Colmn 3
(1,1) & (2,1)		(3,1)
Col 1	Col 2	Col 3
c(1,1)&c(2,1)	c(1,2) c(1,3)	(2,2) (3,2)
	c(2,2) c(2,3)	

Done My Computer 100%

HTML element	Atributes	Attribute values	What attribute does
<table></table>	align =	Left,Right	Justifies table on page
	bgcolor =	Colour name or hex colour code	Sets background colour for table
	border =	n (integer)	Sets width (in pixels) of 3-D table border
	cellpadding =	n (integer)	Sets width (in pixels) of margin inserted inside cell boundaries
	cellspacing =	n (integer)	Sets width (in pixels) of boundary separating cells

HTML element	Attributes	Attribute values	What attribute does
<code><table></table></code>	<code>summary =</code>	A quoted string	Summarises table for non-visual browsers
	<code>width =</code>	n (integer) or %	Integer sets table width in pixels. % sets width at % of width of window
<code><td></td></code> and <code><th></th></code>	<code>align =</code>	Left, center, right	Sets horizontal alignment for a cell
	<code>bgcolor =</code>	Colour name or hex colour code	Sets cell background colour
	<code>colspan =</code>	n (integer)	Lets cell span n columns

HTML element	Atributes	Attribute values	What attribute does
	nowrap =	-	Keeps all text inside cell on single line unless broken by BR or P tags
	rowspan =	n (integer)	Lets cell span n rows
	valign =	Top, middle, bottom, baseline	Sets vertical alignment for a cell
	width =	n (integer)	Sets cell background colour

HTML Element	Attribute	Attribute Value	What attribute does
<code><tr></tr></code>	Align =	Left, center, right	Sets alignment for each cell in row
	Nowrap	-	Disables wrapping for all cells in row
	Valign =	Top, middle, bottom, baseline	Sets vertical alignment for cells in row